

# Actual4Labs

Pass Your Next Certification Exam Fast!

Everything you need to prepare, learn & pass your certification exam easily.

Login / Register

Shopping Cart (0)

Search...



### Online Test Engine

Instant Online Access, Test History and Performance Review, Supports Windows / Mac / Android / iOS, etc. →

### Desktop Test Engine

Installable Software Application, Simulates Real Exam Environment, Supports MS Operating System, Practice Offline Anytime. →

### PDF Format

Printable PDF Format, Prepared by IT Experts, Study Anywhere, Anytime, Free PDF Demo Available. →

Choose the version that fits your needs	PDF Version	Desktop Test Engine	Online Test Engine
Latest and Up-to-Date exam dumps with real exam questions answers.	✓	✓	✓
Get 12-Months free updates without any extra charges.	✓	✓	✓
Experience same exam environment before appearing in the certification exam.	✗	✓	✓
100% exam passing guarante in the first attempt.	✓	✓	✓
20% discount on more than one license and 30% discount on 5+ license purchases.	✗	✓	✓
100% secure purchase on SSL.	✓	✓	✓
Completely private purchase without sharing your personal info with anyone.	✓	✓	✓

<http://www.actual4labs.com>

Excellent Quality Exam Dumps Questions Never Let You down -  
Actual4Labs

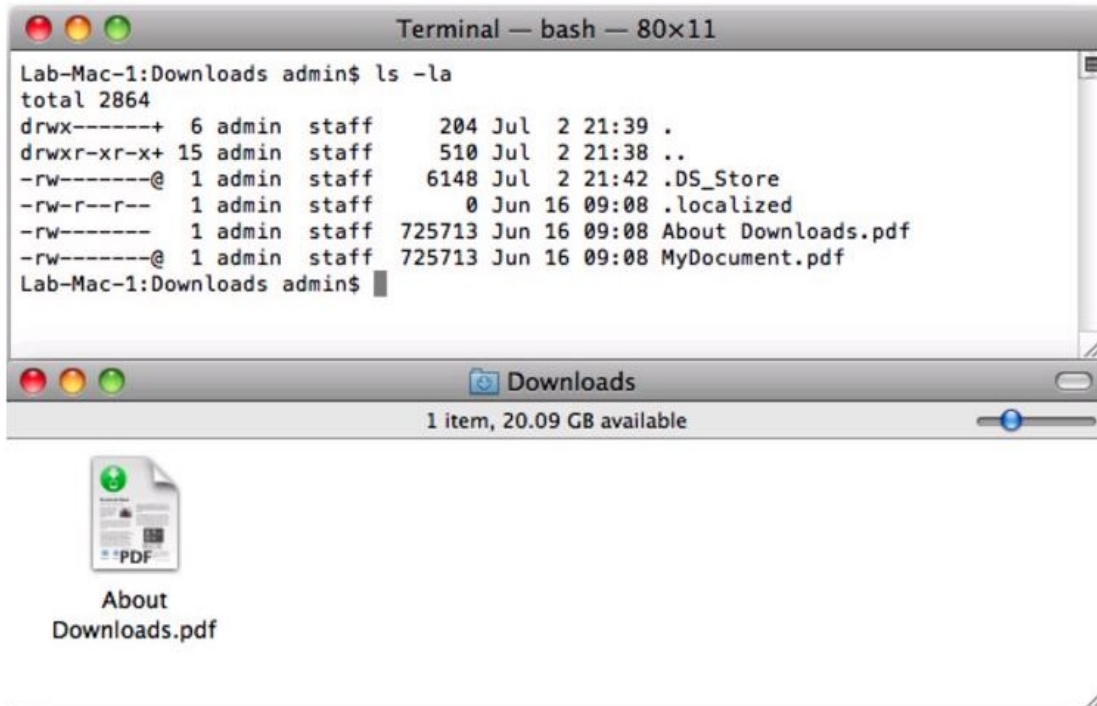
**Exam :** 9L0-403

**Title :** Mac OS X Support Essentials 10.6

**Vendors :** Apple

**Version :** DEMO

1. Review the two screenshots of the contents of the /Users/admin/Downloads/ folder, and then answer the question below. Which statement describes why the file "MyDocument.pdf" is displayed in Terminal but not in the Finder?



- A. The file's sticky bit is enabled.
- B. The file's hidden flag is enabled.
- C. The file is stored in an aliased location.
- D. The file has an active access control list.

**Answers: B**

2. When a user performs a default installation of Mac OS X v10.6 on a computer that has an earlier version of Mac OS X and existing user accounts, what happens?

- A. The Installer archives the older operating system, and maintains the user accounts.
- B. The Installer replaces the older operating system with the Mac OS X v10.6 operating system, and maintains the user accounts.
- C. The Installer upgrades the older operating system to Mac OS X v10.6. It archives the user accounts, but they can be restored manually.
- D. The Installer erases the older operating system and installs Mac OS X v10.6. It archives the user

accounts, but they can be restored manually.

E. The Installer presents the options to upgrade, archive, or erase the older operating system and user accounts, and the installation proceeds according to the user's selection.

**Answers: B**

3. Review the screenshot, and then answer the question below. You are starting up an Intel-based Mac OS X computer, and see the screen shown above. What does it mean?



- A. The system's firmware cannot locate a valid booter file.
- B. The system has detected an unmountable Boot Camp partition.
- C. Invalid startup modifier keys are being pressed on the keyboard.
- D. The folder that holds all the user home folders cannot be located or accessed.

**Answers: A**

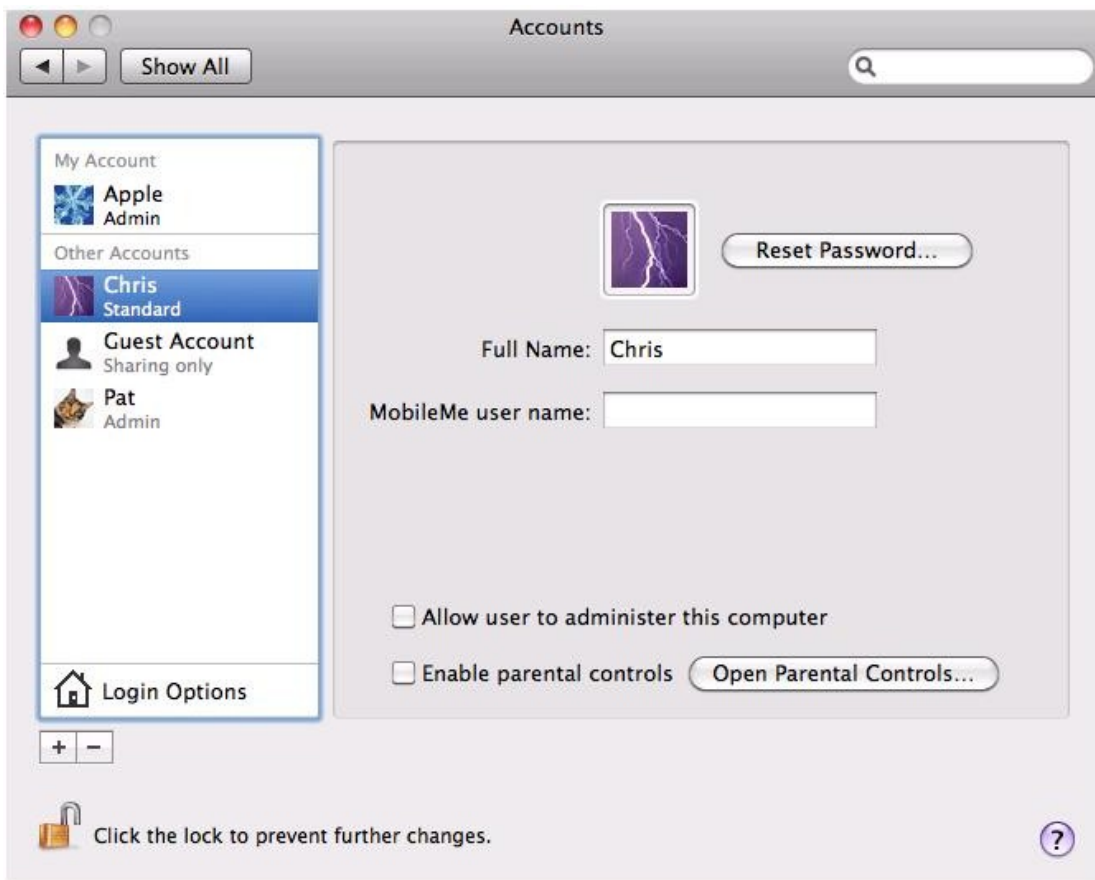
4. Tom wants to share a document with Harriet. Both have standard user accounts on the same Mac OS X v10.6 computer. Which of these is NOT a location where Tom can store the document so that Harriet can read it?

- A. /Users/Shared/
- B. /Users/tom/Public/
- C. /Users/harriet/Public/
- D. /Users/harriet/Public/Drop Box/

**Answers: C**

5. Review the screenshot, and then answer the question below. You perform a default installation of Mac

OS X v10.6, and then create an account for Chris. The Chris account is a member of which group?



- A. staff
- B. chris
- C. wheel
- D. admin
- E. workgroup

**Answers: A**

6. The primary role of the master password in Mac OS X v10.6 is to let you \_\_\_\_\_.

- A. access all the passwords stored in a local keychain
- B. reset the password of an account that has FileVault enabled
- C. change the startup device by holding down the Option key while the computer starts up
- D. connect to any password-protected web server whose password is stored in a local keychain

**Answers: B**

7. Which procedure can help you identify an application that will run with Rosetta?

- A. Control-click the application icon, and choose Display Environment; if the Finder displays the Rosetta icon, the application will run with Rosetta.
- B. From the command line, run ls in the directory where the application resides; if the application type is X11, the application will run with Rosetta.
- C. Click the application icon, then choose Get Info from the Finder's File menu; if the Kind field says, "Application (PowerPC)", the application will run with Rosetta.
- D. Click the application icon, then choose Get Info from the Finder's File menu; if the Application Environment field says, "Rosetta", the application will run with Rosetta.

**Answers: C**

8. Which process will let you start up a computer in target disk mode?

- A. Start up the computer from the Mac OS X Install DVD, then choose Target Disk Mode from the Utilities menu.
- B. Hold down the S key on the keyboard while the computer starts up, then type the command reboot -target.
- C. Hold down the T key on the keyboard while the computer starts up, until a FireWire icon appears on the screen.
- D. Hold down the Option key on the keyboard while the computer starts up, until a dialog appears, then select Target Disk Mode from the dialog.

**Answers: C**

9. In what order do these Mac OS X components load at startup?

- A. 1. Firmware2. Booter3. Kernel
- B. 1. Booter2. Kernel3. Firmware
- C. 1. Kernel2. Firmware3. Booter
- D. 1. Firmware2. Kernel3. Booter

**Answers: A**

10. What is the role of the launchd process in the Mac OS X v10.6 system startup process?
- A. The init process starts launchd, then launchd starts the scripts stored in /etc/cron/.
  - B. The kernel starts launchd, then launchd starts all the other processes involved in startup.
  - C. launchd starts the init process, then init starts all the other processes involved in startup.
  - D. The init process starts launchd, then launchd starts the items stored in the StartupItems folder.

**Answers: B**